

IRF2 Antibody (Center)
Affinity Purified Rabbit Polyclonal Antibody (Pab)
Catalog # AP11225C

Specification

IRF2 Antibody (Center) - Product Information

Application	WB,E
Primary Accession	P14316
Other Accession	NP_002190
Reactivity	Human, Mouse
Host	Rabbit
Clonality	Polyclonal
Isotype	Rabbit IgG
Antigen Region	225-255

IRF2 Antibody (Center) - Additional Information

Gene ID 3660

Other Names

Interferon regulatory factor 2, IRF-2, IRF2

Target/Specificity

This IRF2 antibody is generated from rabbits immunized with a KLH conjugated synthetic peptide between 225-255 amino acids from the Central region of human IRF2.

Dilution

WB~~1:1000

E~~Use at an assay dependent concentration.

Format

Purified polyclonal antibody supplied in PBS with 0.09% (W/V) sodium azide. This antibody is purified through a protein A column, followed by peptide affinity purification.

Storage

Maintain refrigerated at 2-8°C for up to 2 weeks. For long term storage store at -20°C in small aliquots to prevent freeze-thaw cycles.

Precautions

IRF2 Antibody (Center) is for research use only and not for use in diagnostic or therapeutic procedures.

IRF2 Antibody (Center) - Protein Information

Name IRF2

Function Specifically binds to the upstream regulatory region of type I IFN and IFN-inducible MHC class I genes (the interferon consensus sequence (ICS)) and represses those genes. Also acts as an

activator for several genes including H4 and IL7. Constitutively binds to the ISRE promoter to activate IL7. Involved in cell cycle regulation through binding the site II (HiNF-M) promoter region of H4 and activating transcription during cell growth. Antagonizes IRF1 transcriptional activation.

Cellular Location

Nucleus.

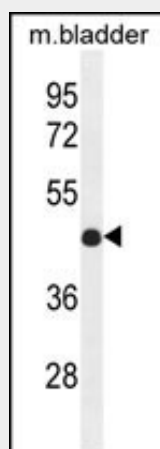
Tissue Location

Expressed throughout the epithelium of the colon. Also expressed in lamina propria.

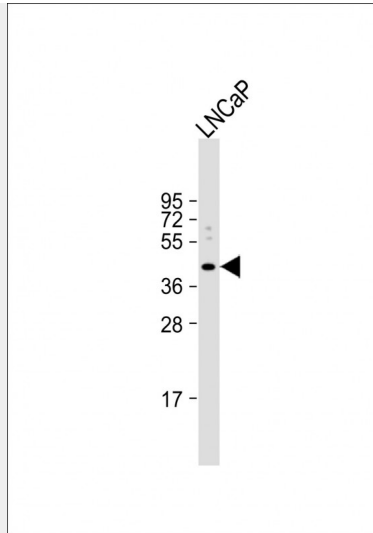
IRF2 Antibody (Center) - Protocols

Provided below are standard protocols that you may find useful for product applications.

- [Western Blot](#)
- [Blocking Peptides](#)
- [Dot Blot](#)
- [Immunohistochemistry](#)
- [Immunofluorescence](#)
- [Immunoprecipitation](#)
- [Flow Cytometry](#)
- [Cell Culture](#)

IRF2 Antibody (Center) - Images

IRF2 Antibody (Center) (Cat. #AP11225c) western blot analysis in mouse bladder tissue lysates (35ug/lane). This demonstrates the IRF2 antibody detected the IRF2 protein (arrow).



Anti-IRF2 Antibody (Center) at 1:1000 dilution + LNCaP whole cell lysate Lysates/proteins at 20 µg per lane. Secondary Goat Anti-Rabbit IgG, (H+L), Peroxidase conjugated at 1/10000 dilution. Predicted band size : 39 kDa Blocking/Dilution buffer: 5% NFDM/TBST.

IRF2 Antibody (Center) - Background

IRF2 encodes interferon regulatory factor 2, a member of the interferon regulatory transcription factor (IRF) family. IRF2 competitively inhibits the IRF1-mediated transcriptional activation of interferons alpha and beta, and presumably other genes that employ IRF1 for transcription activation. However, IRF2 also functions as a transcriptional activator of histone H4. [provided by RefSeq].

IRF2 Antibody (Center) - References

Rose, J.E., et al. Mol. Med. 16 (7-8), 247-253 (2010) :
Lace, M.J., et al. Virology 399(2):270-279(2010)
Masumi, A., et al. Biochem. Biophys. Res. Commun. 391(4):1623-1628(2010)
Daley, D., et al. Hum. Genet. 125(4):445-459(2009)
Dhar, D., et al. PLoS ONE 4 (9), E7049 (2009) :

IRF2 Antibody (Center) - Citations

- [Embryonic stem cell-specific microRNAs contribute to pluripotency by inhibiting regulators of multiple differentiation pathways.](#)